

CLONE-A-WILLY[®] plus + balls

This kit contains:

- ◆ clear molding tube
- ◆ balls container
- ◆ body-safe molding powder (2)
- ◆ 2-part 100% platinum cure silicone
- ◆ vibrating egg
- ◆ stir-stick & thermometer
- ◆ duct tape

Things you'll need:

- ◆ measuring cup
- ◆ large mixing bowl
- ◆ timer
- ◆ scissors
- ◆ large mixing spoon

Total project time from
start → finish: 24 hours

THANK YOU FOR PURCHASING THIS KIT!

All of our products have been proudly and lovingly made in Portland, OR since 2001. We stand behind every kit we sell so if you have any questions, please don't hesitate to contact us.

We'd love to hear from you!

EMAIL: questions@cloneawilly.com

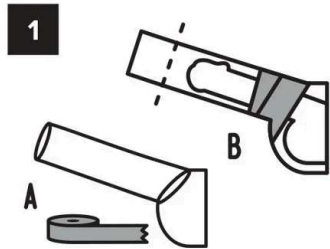
CALL: 503-232-5109

VISIT: www.cloneawilly.com



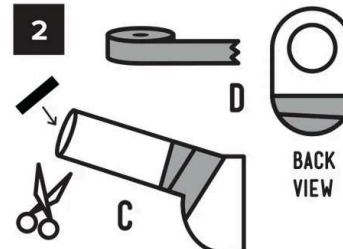
BEFORE YOU START

- ◆ Timing is important! **"Read"** the entire instructions before you begin!
- ◆ A sexy helper and penis pumps/rings can make this easier and more fun!
- ◆ Are you extra hairy? Rub on petroleum jelly before molding or trim it short.
- ◆ Curved? Visit: cloneawilly.com/curved
- ◆ Cloning can be messy. We suggest cloning your willy over an easy-to-clean, hard surface. Once it sets it peels right off!
- ◆ We've included an extra bag of molding powder, just in case you aren't happy with your first mold.



A. Tape the open end of the tube to the Balls Container. Make sure the container fits properly over your penis and balls.

B. While fully erect, measure yourself inside the tube. Mark the tube 1/2" from the tip of your erection.



C. Carefully and evenly cut the tube at your mark so the plastic plug fits tightly inside the end of the tube.

D. Tape a straight line across the bottom of the balls container, about 1 1/2" from the bottom. This is to prevent spilling.



Measure **2 1/2 cups** of 90°F water and pour it into your large mixing bowl. Double check the temperature—it **must be 90°F!**

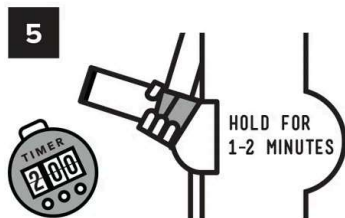
NOTE: You only have 2 minutes to do the next step. Have a timer ready!



NOW START YOUR TIMER!

Carefully cut open one bag of white molding powder and empty it into the mixing bowl. Mix well for about 45 seconds. The mixture will remain slightly lumpy.

Pour all of the mixture into the **molding tube** and **quickly move on to step 5!**



While standing, carefully but quickly insert your penis and balls, pushing the container against your body to prevent spillage, even though some spillage is expected.



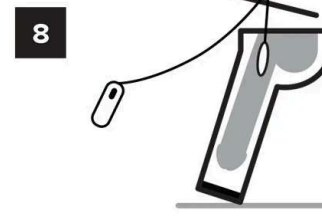
Once the mold has solidified (about 1-2 minutes), gently remove your penis from the mold and container.

For best detail, let the mold sit for 4-8 hours before moving to step 7.



NOTE: Jar lids may be very tight. Please open with care.

Mix the two jars of silicone together in a clean, disposable container. Using the wooden stir-stick, get as much of the silicone out as possible. **Mix thoroughly** and set aside.



Condensation may occur in the mold. Pour out any water that collects.

Wipe off the stir-stick and loosely tie the cord of the vibrator around it, then lower the vibrating egg into the empty mold, letting the stir-stick rest over the top of the tube.

Lean the mold against the corner of a wall, so the top will be flat and it won't fall over.

Very slowly pour in the silicone mixture.



Wait at least 12 hours before removing your finished replica from the mold.

Congratulations! Your replica is complete!

To care for your replica, simply wash with soap and water.