



# LIBERATOR<sup>®</sup>

---

## WEDGE<sup>®</sup>

---



#### INCLUDES:

- Contoured foam Wedge® Shape
- Microvelvet cover
- Moisture-resistant liner

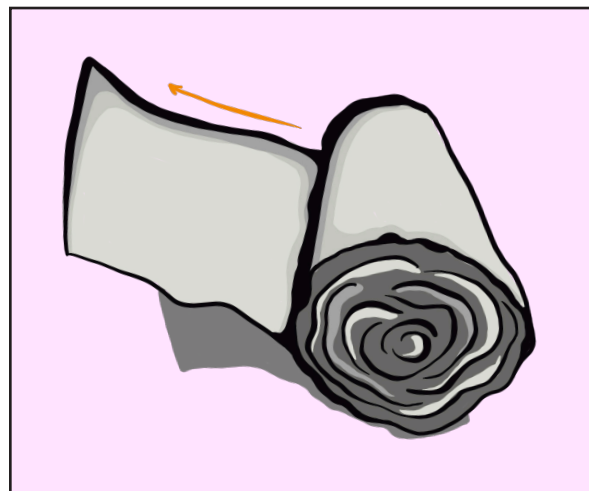
*Enjoy!*

# GET EXCITED!

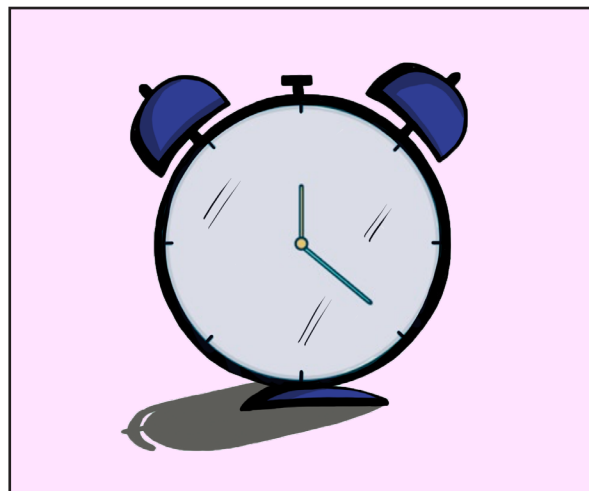
## This love triangle won't let you down.

Before assembly, here's more about Liberator® eco-compressed packaging. Liberator Shapes are roll-compressed with 90% of the air removed just prior to shipping. By using this innovative technology, we've been able to significantly reduce our carbon footprint without compromising the integrity of the product.

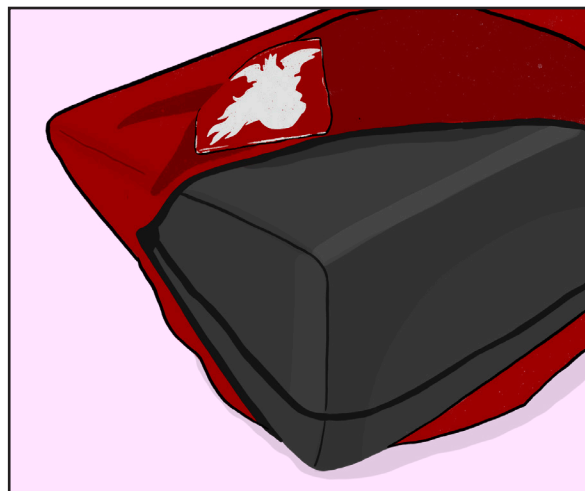
### INSTRUCTIONS



**STEP 1:** Unroll plastic film. Do not cut open; do not remove protective liner.



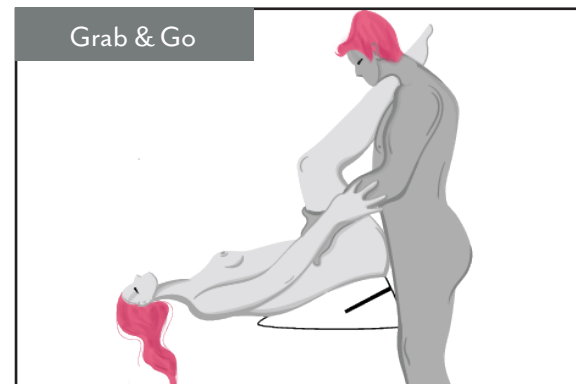
**STEP 2:** Shape will take a few hours to fully expand, but cover can be applied after 20 minutes.



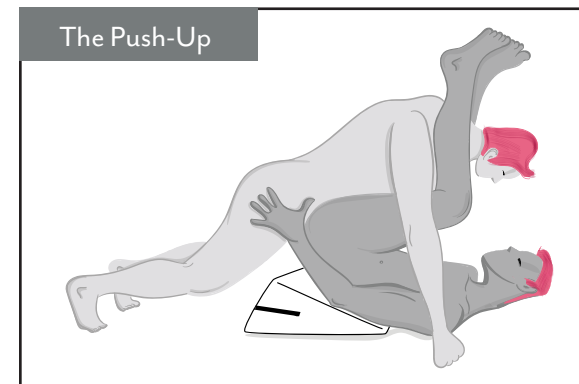
**STEP 3:** Apply the cover, pressing down on the foam where needed, and zip closed.

TO CLEAN COVER, MACHINE WASH COLD, TUMBLE DRY LOW

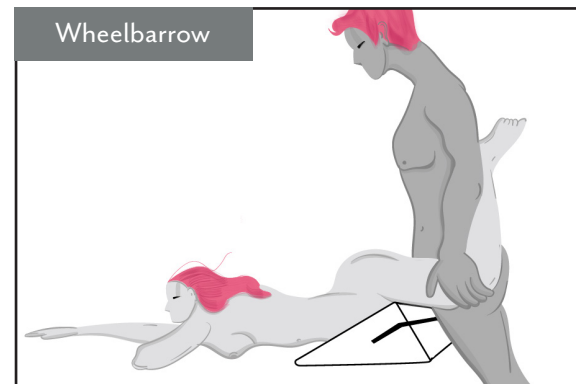
Grab & Go



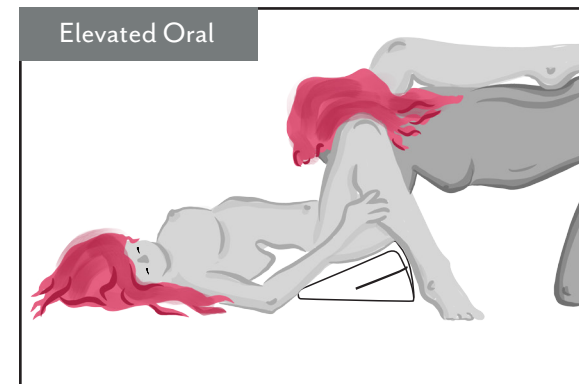
The Push-Up



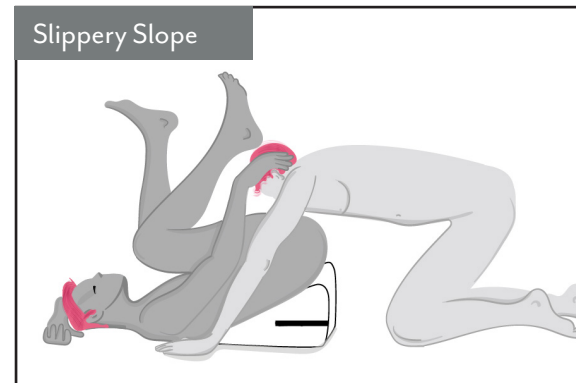
Wheelbarrow



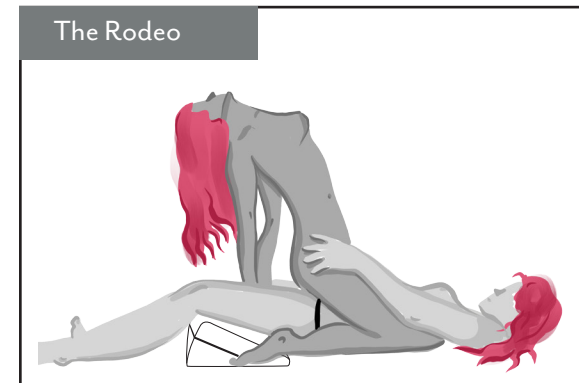
Elevated Oral



Slippery Slope



The Rodeo





A woman with long brown hair and red lipstick is lying on her back on a white, shaggy rug. She is wearing white lace underwear. Her hands are clasped near her head. To her right is a large, red, wedge-shaped pillow. The brand name 'LIBERATOR' is printed in large white letters across the middle of the image, with 'WEDGE' in smaller white letters below it.

# LIBERATOR<sup>®</sup>

---

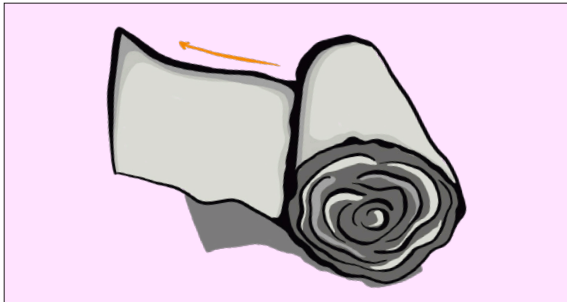
## WEDGE<sup>®</sup>

---

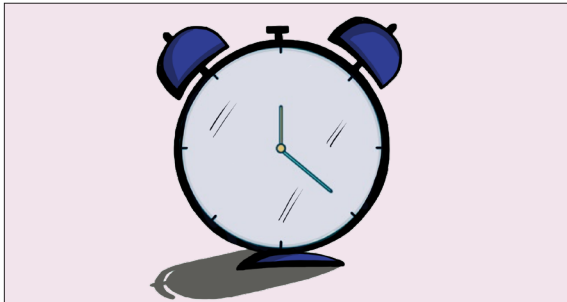


## GET EXCITED!

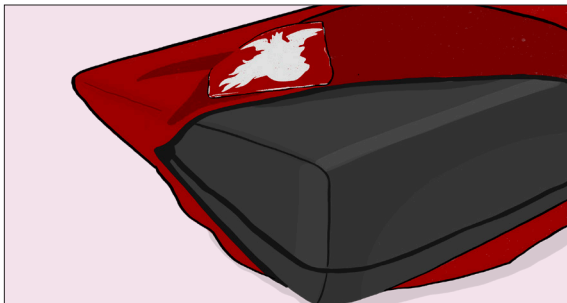
This love triangle won't let you down.



**STEP 1:** Unroll plastic film. Do not cut open; do not remove protective liner.

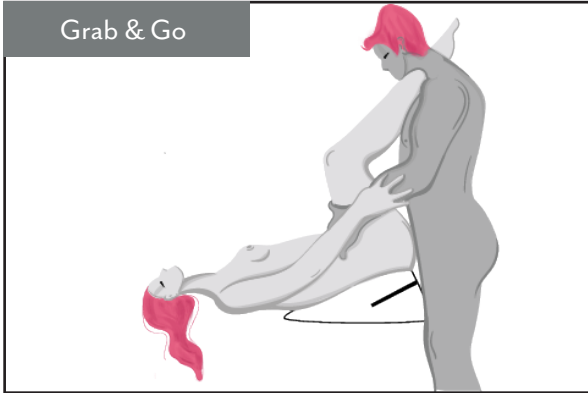


**STEP 2:** Shape will take a few hours to fully expand, but cover can be applied after 20 minutes.

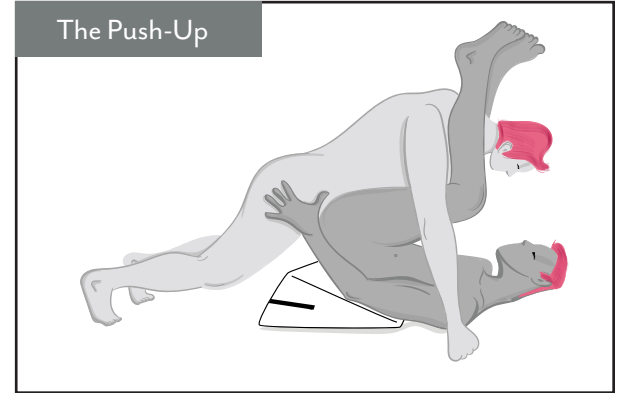


**STEP 3:** Apply the cover, pressing down on the foam where needed, and zip closed.

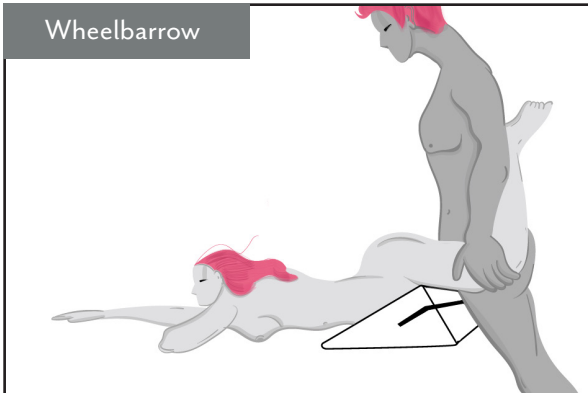
Grab & Go



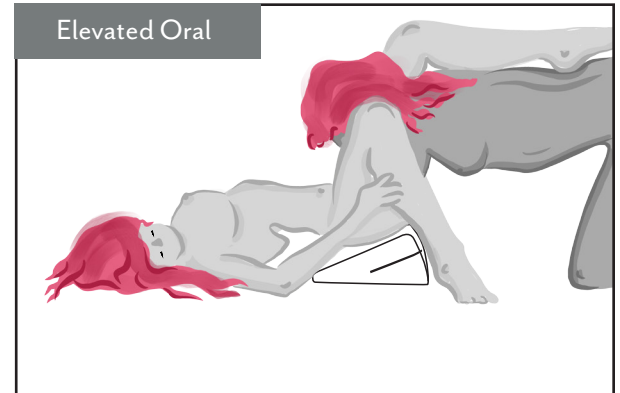
The Push-Up



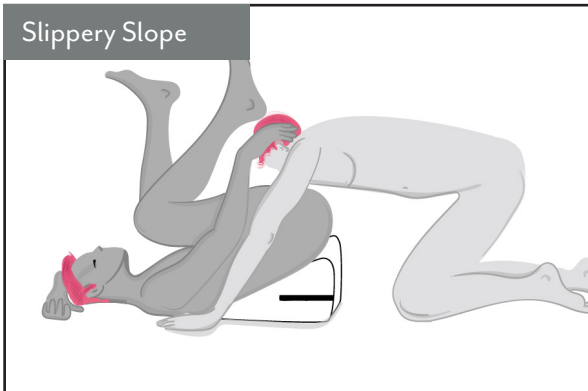
Wheelbarrow



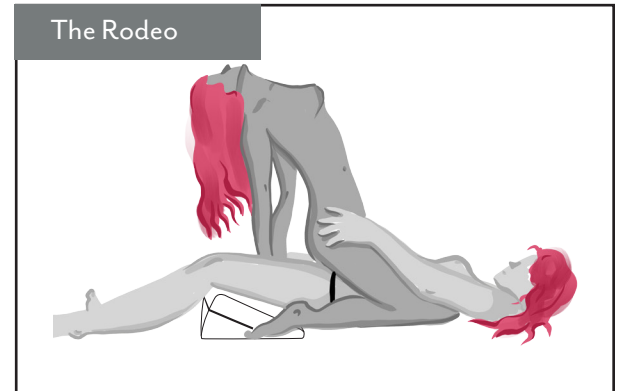
Elevated Oral



Slippery Slope



The Rodeo



TO CLEAN COVER, MACHINE WASH COLD, TUMBLE DRY LOW