

MAXTASY



**SUCTION
MASTER+**

USER MANUAL

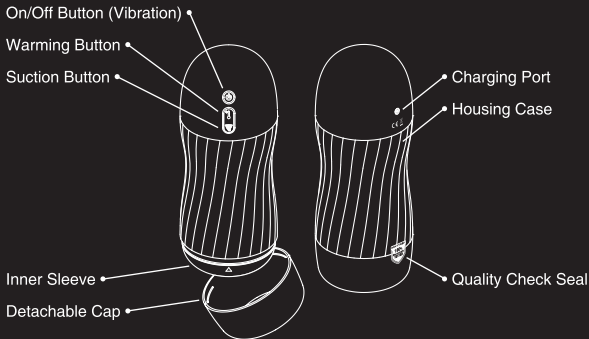
**THREE OF THE WORLD'S
MOST PLEASURABLE SENSATIONS
IN ONE STROKER**

#engineered4pleasure

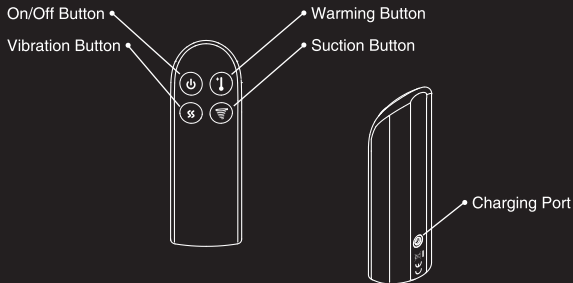
Congratulations on your purchase of Suction Master+,
the world's most elite pleasure stroker equipped with an
unique technology which combines three most pleasurable
sensations – suction, vibration and warming.

Please take a moment to read through this user manual
before using the stroker.

YOUR SUCTION MASTER+



REMOTE CONTROL

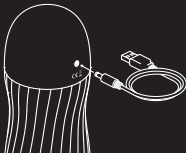


CHARGING

Make sure to charge your SUCTION MASTER+ together with the remote before the first use.

Charging time
Suction Master+:
180min

Running time
Suction Master+:
120min



Charging time
Remote:
60min

Running time
Remote:
12hrs



In case the battery is getting low, the LED around button area starts flashing fast.
Insert the DC plug into the DC port.

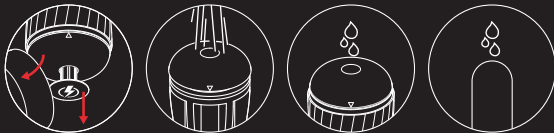
LED will start flashing slowly indicating charging.

Once fully charged LED stops flashing.

Charge at least once every 6 months to protect and extend battery lifetime.

IMPORTANT: Use only original USB charging cable provided with your MAXTASY product. USB adapter must not have higher charging current than 1A (one ampere).

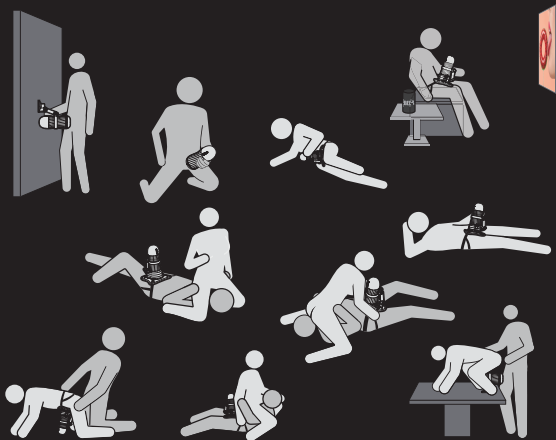
HOW TO USE



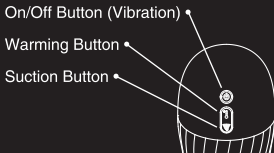
1. Remove the cap and the sleeve inner support
2. Wash the inner sleeve in warm soapy water before the first use
3. Lube up inner sleeve
4. Lube up your penis
5. Insert penis
6. Enjoy
7. Clean immediately after use, following cleaning instructions

IMPORTANT: For the most pleasurable sensation, always apply a generous amount, at least 15ml/0.5oz, of water-based lubricant to the penis and the inner side of the sleeve prior to use.

POSITION GUIDE



BUTTONS' CONTROL WITHOUT THE REMOTE



Press and hold On/Off Button until it lights up = product in stand-by mode

Press On/Off Button shortly = vibration mode 1 turns on

Press On/Off Button again = move between vibration modes
(total of 10 vibration modes)

Press Suction Button shortly once= suction mode 1 turns on

Press Suction Button shortly again = move between suction modes
(total of 10 suction modes)

Press and hold Suction Button = suction function turns off

Press Warming Button once = warming is activated and red light turns on

Press Warming Button shortly again = heating is de-activated and red light turns off

Press and hold On/Off Button = all functions turn off and light turns off

TIP: For more details visit www.maxtasy.com/howtouse

BUTTONS' CONTROL WITH THE REMOTE



Press and hold On/Off Button on the main unit until it lights up = product is stand-by mode

Press and hold On/Off Button on the remote until it lights up = remote control is activated

Press Suction Button on the remote shortly once = suction mode 1 turns on

Press Suction Button on the remote shortly again = move between suction modes (total of 10 suction modes)

Press and hold Suction Button on the remote = suction function turns off

Press Vibration Button on the remote shortly once = vibration mode 1 turns on

Press Vibration Button on the remote shortly again = move between vibration modes (total of 10 vibration modes)

Press and hold Vibration Button on the remote = vibration function turns off

Press Warming Button on the remote once = warming is activated and red light turns on

Press Warming Button on the remote again = warming is de-activated and red light turns off

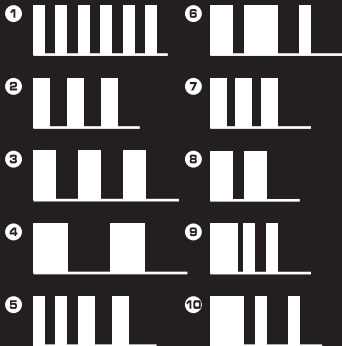
Press On/Off Button on the remote shortly anytime = all functions turn off

Press and hold On/Off Button on the remote = remote control is de-activated and light turns off

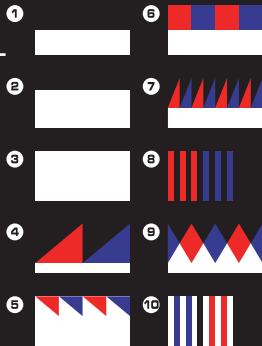
TIP: The remote-control range is 5meters




MODE DIAGRAMS

Suction modes



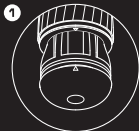
Vibration modes



 = Left & right motor
 = Right motor
 = Left motor

CLEANING

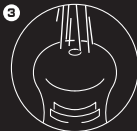
Wash the inner sleeve in soapy water before and after every use, including the first.



remove the sleeve



wash the inner sleeve
in soapy water



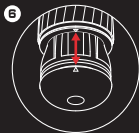
turn the sleeve inside out
and wash again



dry both sides of
the sleeve with a towel



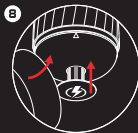
open the housing



insert the sleeve
to the housing
follow the position mark



insert motors to the sleeve
and close the housing



put back the cap
and inner support

Clean the outer case with a damp cloth or tissue and dry after use.

IMPORTANT: Never let water come inside the main housing case.

TIP: For more details visit www.maxtasy.com/cleaning

THE WORLD OF MAXTASY

**SUCTION
MASTER**



**STROKE
MASTER**



**VIBRATION
MASTER**



**SUCTION
MOUNT**



**STRAP
ON**



**WARMING &
DRYING DOCK**

WWW.MAXTASY.COM

TROUBLESHOOTING

Product does not turn on	Charge the product fully
	Disconnect the charging cable
	Turn on the product with On/Off Button
Product is not charging/light is not flashing	Plug the DC cable in the DC port on your toy
	Plug the USB cable in the USB adaptor
Suction is weak	Ensure the sleeve is inserted correctly
Vibration is weak	Ensure the sleeve is inserted correctly
LED is flashing but product works	Low battery indicator, charge the product fully
Remote does not work	Make sure the main unit as well as the remote are in stand-by mode, both On/Off buttons are light up
	Read BUTTON'S CONTROL WITH THE REMOTE

SPECIFICATION

Material:	Housing and buttons ABS, inner sleeve TPE
Dimensions:	Height 10" (255mm) Outer Diameter 3" (85mm) Insertable depth 5½" (141mm standard version) Insertable depth 5¾" (147mm realistic version)
Weight:	670 g (Standard version) 700 g (Realistic version)
Battery:	Li-Ion 2600 mAh 3.7V
Noise Level:	< 45dB
Warming - max temp:	98°F (36°C)
Charging Time Suction Master+:	180min
Running Time Suction Master+:	120min
Charging Time Remote:	60min
Running Time Remote:	12hr
Remote Range:	5meters
Remote Frequency:	433MHz

WARRANTY

Your product is covered by one year warranty valid from the date of purchase.

Please note the warranty is rendered void if:

- 1) Quality Checked Seal was removed
- 2) There is no valid proof of purchase
- 3) The damage was caused by dropping, stepping on or any other accidental damage after purchase
- 4) The product was modified or dismantled
- 5) The outer housing case was submerged in liquid

For detailed warranty policy and/or to make a claim

visit www.maxtasy.com/warranty

SAFETY & WARNINGS

Keep away from direct sunlight and humidity.

Those who use a pacemaker and/or have diabetes, phlebitis, thrombosis or any other health conditions, should consult with a medical professional regarding the risk of blood clots before using the product.

If you notice any visible damage, turn the product off and stop using it immediately.

Do not share the product with others.

This is an adult novelty product and children should not play with it.

This product is for novelty use only. The manufacturer holds no liability.

Do not use alcohol-, acid- or alkali-based cleaners. Always clean the inner sleeve with warm soapy water and the outer housing case with a damp cloth or tissue.

Ensure that the inner sleeve is fully dry before installing it back in the outer housing case. Do not allow water inside the outer housing case.

IMPORTANT: If you feel any discomfort when using the product, turn the product off and stop using it immediately. Contact a medical professional.

Designed and developed in California U.S.A.

Manufactured for Maxtasy in China

FCC ID 2A84DMAXSUCPLUS

Patented DE file number 20 2021 105 754.8

WEBSITE: www.maxtasy.com

SUPPORT: support@maxtasy.com

